

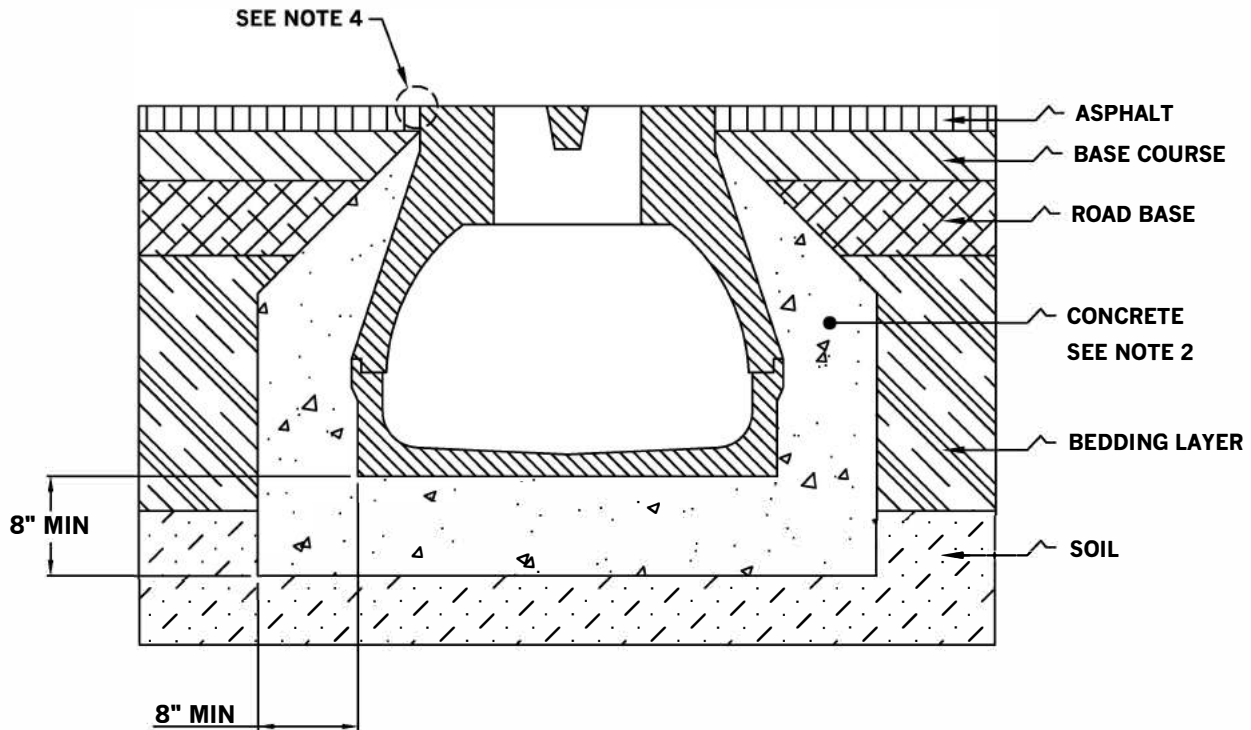


INSTALLATION DRAWING

ACO, Inc.
9470 Pinecone Dr.
Mentor, OH 44060
PH: 440-285-7000
FX: 440-285-8517
e-mail: sales@acousa.com

DRWG# 1619 Date: 12.17.02
WWW.ACOUSA.COM

AT500: Amphibian Guidance System Load Class A-D: Asphalt



NOTES:

1. It is necessary to ensure the minimum dimensions shown are suitable for the existing ground conditions. *Engineering advice may be required.*
2. A minimum concrete strength of 3000 PSI is recommended. The concrete should be vibrated to eliminate air pockets.
3. The finished level of the surround must be approx. 1/8" above the top of the channel edge.
4. Refer to ACO'S latest installation instructions for complete details.



AT500: Amphibian Guidance System

ACO Polymer Products Inc.
P.O. Box 245
Chardon, OH 44024
PH: 440-285-7000
FX: 440-285-8517
e-mail: sales@acousa.com

DRWG# 1619 Date: 12.17.02
WWW.ACOUSA.COM

SPECIFICATION CLAUSE

The surface drainage system shall be polymer concrete AT500 tunnel system with a slotted upper surface as manufactured by ACO Polymer Products, Inc., Chardon, Oh.

Tunnels will be manufactured from polyester resin polymer concrete.

The system shall be 19.7 inches (500mm) nominal inside width with a 23.6 in. (599mm) overall width.

The complete Amphibian Guidance System shall be by ACO Polymer Products, Inc. Any deviation or partial system design and/or improper installation will void any and all warranties provided by ACO Polymer Products, Inc.

The tunnel system shall be independently certified to withstand loadings to load class D (DIN19580). The tunnel system shall have a slotted upper surface to ensure the climatic conditions remain constant.

Polymer Concrete shall have material properties of: compressive strength range between 14,000-14,500 psi; flexural strength between 3600-4500 psi; tensile strength of 1500 psi. The material water absorption rate shall not exceed 0.1 % by weight and shall be resistant to prolonged salt exposure, repetitive frost cycles and chemically resistant to dilute acids and alkalis.

The system shall be installed in accordance with the manufacturer's instructions and recommendations.